

NEW PRODUCT SPEC SHEET

Model Number: R5

- Intel® Core™ X-series Processors, Socket FCLGA2066 ; products formerly Cascade Lake; Intel® Xeon® Processor E7 v4 Family, Socket FCLGA 2011; products formerly Broadwell; Intel® Xeon® Processor E5 v4 Family, Socket FCLGA 2011; products formerly Haswell
- For Square ILM only
- Active Side-Blow Cooler for 2U Server

Overall Specification:

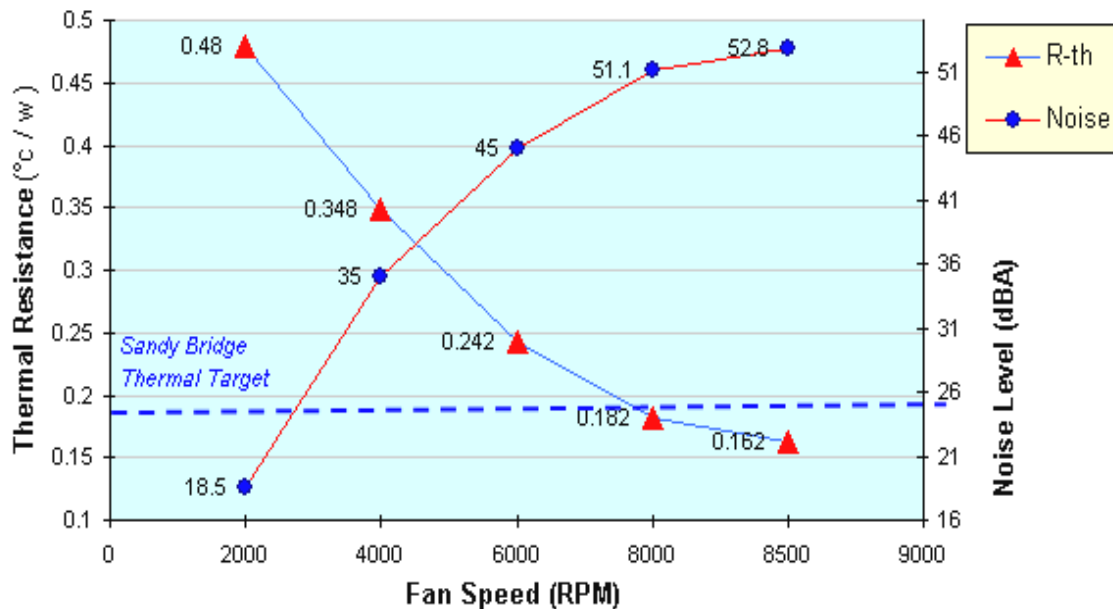
- Dimension: 91.5 x 91.5 x 66.0 mm
- Weight: 590g ± 5g
- 6025 Side Blow Fan with PWM Function
- Material: Aluminum Stacked Fins with Heat Pipes Embedded
- Heat Transfer Rate Upgraded Form Heat Pipes Directly Contact CPU
- Convenient Heat Sink Captive Mounting
- Back Plate is not included
- Thermal Grease Shin-Etsu 7762 Pre-printed
- Support CPU Power up to 165 Watts Heat Dissipation

Fan Specification:

- Model Number: DF126025BU-PWM
- Dimension: 60 x 60 x 25 mm
- Bearing: Double-Ball
- Rated Voltage: 12V
- Rated Speed:
 - At Duty Cycle 0~20%: 1700 ± 200 RPM
 - At Duty Cycle 50%: 4000 ± 10% RPM
 - At Duty Cycle 100%: 8000 ~ 8500 RPM
- Rated Input Power:
 - At Duty Cycle 0~20%: 1.2 W
 - At Duty Cycle 50%: 2.5 W
 - At Duty Cycle 100%: 9.6 W

- Rated Airflow:
 - At Duty Cycle 0~20%: 9.86 CFM
 - At Duty Cycle 50%: 23.21 CFM
 - At Duty Cycle 100%: 49.32 CFM
- Rated Static Pressure:
 - At Duty Cycle 0~20%: 0.86 mm-H₂O
 - At Duty Cycle 50%: 4.76 mm-H₂O
 - At Duty Cycle 100%: 21.50 mm-H₂O
- Rated Acoustical Noise:
 - At Duty Cycle 0~20%: 19.32 dBA
 - At Duty Cycle 50%: 37.89 dBA
 - At Duty Cycle 100%: 54.26 dBA
- Lead Wire Pin Out:
 - Pin#1-Black(-)
 - Pin#2- Yellow(+)
 - Pin#3- Green(Tachometer/ Signal Output)
 - Pin#4- Blue (PWM)

Active Cooler R5 Cooling Performance VS. Airflow & Noise:




6/27/2018 LANG

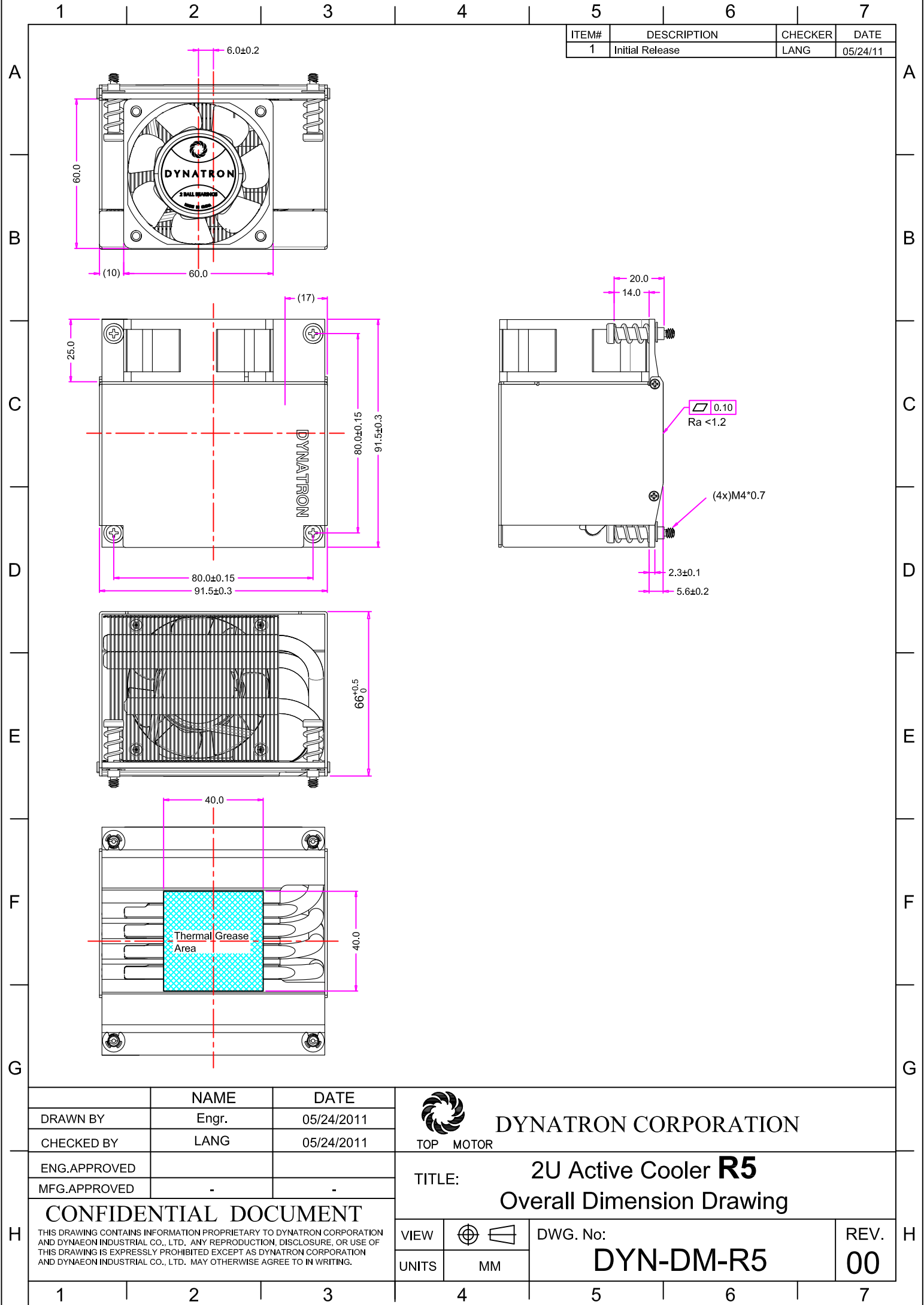
THIS DRAWING CONTAINS INFORMATION PROPRIETARY TO DYNATRON CORPORATION AND DYNAEON INDUSTRIAL CO., LTD. ANY REPRODUCTION, DISCLOSURE, OR USE OF THIS DRAWING IS EXPRESSLY PROHIBITED EXCEPT AS DYNATRON CORPORATION AND DYNAEON INDUSTRIAL CO., LTD. MAY OTHERWISE AGREE TO IN WRITING.

REV#	DESCRIPTION	CHECKER	DATE
0.0	INITIAL RELEASE	LANG	05/24/2011
1.0	UPDATE COOLING FAN SPEC	LANG	06/27/2018

An exploded view diagram of the power supply unit assembly. The diagram shows the following components and their assembly sequence:

- 1**: The main power supply unit housing.
- 2**: The front panel, which is shown being inserted into the front of the housing.
- 3**: A screw used to secure the front panel to the housing.
- 4**: A corner bracket used to reinforce the front panel's attachment.
- 5**: A spring used to secure the front panel.
- 6**: A screw used to secure the front panel.
- 7**: A screw used to secure the front panel.
- 8**: A screw used to secure the front panel.
- 9**: The heat sink assembly, which is shown being inserted into the back of the housing.

9	SCREW, FAN MOUNTING	STEEL	4
8	THERMAL GREASE, PRE-PRINTED	SHIN-ETSU G751	1
7	SCREW, COVER MOUNTING	STEEL	4
6	C-CLIP	STEEL	4
5	HEATSINK, STACKED FIN	ALUMINUM FIN + HEATPIPES	1
4	SPRING	SWP (850G)	4
3	SCREW, HEATSINK	STEEL (860G)	4
2	COVER, FAN	ALUMINUM, THK 0.8mm	1
1	FAN, DF126025BU-PWM	PLASTIC	1
ITEM#	DESCRIPTION	MATERIAL	QTY.
<div>  DYNATRON CORPORATION </div>			
DRAWN	06/27/2018	Engr	TITLE: 2U Active Cooler R5 BOM & Exploded Assembly Drawing
CHECKED	06/27/2018	LANG	
ENG. APPR.			
MFG. APPR.			
D.A.			
COMMENTS:			DWG. No: DYN-EP-R5
			REV 1.0



ITEM#	DESCRIPTION	CHECKER	DATE
1	Initial Release	LANG	05/24/11

	NAME	DATE
DRAWN BY	Engr.	05/24/2011
CHECKED BY	LANG	05/24/2011
ENG.APPROVED		
MFG.APPROVED	-	-

CONFIDENTIAL DOCUMENT

THIS DRAWING CONTAINS INFORMATION PROPRIETARY TO DYNATRON CORPORATION AND DYNAEON INDUSTRIAL CO., LTD. ANY REPRODUCTION, DISCLOSURE, OR USE OF THIS DRAWING IS EXPRESSLY PROHIBITED EXCEPT AS DYNATRON CORPORATION AND DYNAEON INDUSTRIAL CO., LTD. MAY OTHERWISE AGREE TO IN WRITING.



DYNATRON CORPORATION

TOP MOTOR

TITLE: **2U Active Cooler R5**
Overall Dimension Drawing

VIEW	
UNITS	MM

DWG. No:	DYN-DM-R5
----------	------------------

REV.	00
------	-----------